

Welcome to **NEIGHBORHOOD** TOWN HALL

Neighborhood Support Updates and
Needs Assessment Findings

April 27, 2022, 4:00 – 5:00pm



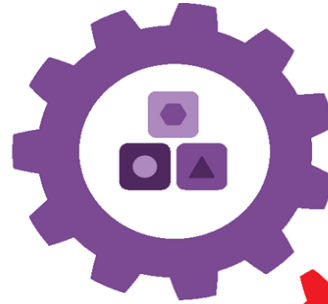
Purpose

Trinity's Neighborhood Support function takes a **place-based approach** to focus on neighborhoods in a holistic manner to solve for key challenges by **combining targeted investments with on-the-ground support**.

Our vision is to **co-develop**, alongside each neighborhood, the necessary supports that help strengthen our communities, and **yield overall child, family and community well-being**.

Well-being Framework

SOCIAL CAPITAL ▶
peer and family
networks
coaching
cohort strategies



◀ **EARLY CHILDHOOD EDUCATION**
Head Start
Early Head Start
child care partnerships
preK
home visiting



HEALTH & WELL-BEING ▲
mental, physical, and
behavioral health
coverage and access
to care
adverse childhood
experiences
toxic stress



ECONOMIC ASSETS ▲
asset building
housing and public supports
financial capacity
transportation



◀ **K-12**
kindergarten ready
3rd grade reading skills
parent engagement
graduation and
postsecondary prep



◀ **POSTSECONDARY & EMPLOYMENT PATHWAYS**
community college
training and credentials
workforce partnerships

Community Forums: What We're Learning

Resounding need for support to address

- Mental health care for parents and children
- Respite and joy
- Opportunities to connect as a community
- Growing food insecurity
- Street homelessness
- Mentorship and internships for HS aged youth

School Leadership Forums: What We're Learning

Resounding need for support to address

- Mental health care for students
- Support for teachers/staff
- Mentorship and internships for HS aged youth

Our Response

Food Outreach

- ❑ Food distribution at **nine locations**, including Trinity
- ❑ Easter Holiday dinner groceries provided over **1,800 meals via an additional 7 sites**
- ❑ Expanded Trinity's distribution offerings to include **breakfast, lunch and dinner**

School Outreach

- ❑ Working with **22 Title I schools** in lower Manhattan
- ❑ Supporting **food pantries** with shipments of groceries
- ❑ Launched an **afterschool program** at the Commons
- ❑ Provided our **resource hotline number** which offers connection to services, as well as free counseling services
- ❑ 2022 **Backpack Drive and Distribution** events
- ❑ Organizing a **college fair** for high school students for Fall '22

Homeless Outreach

- ❑ Partnering with Goddard Riverside and community groups across lower Manhattan to provide **necessities to the street homeless**
- ❑ Organizing groups to pair up with Goddard's team to **distribute necessities and food**

Mental Health Outreach

- ❑ Partnered with Pace University's McShane Center to offer **free counseling** to the community
- ❑ Launching **Stress and Resilience workshops** to increase awareness of the impact of stress and adversity, as well as remove stigma from care
- ❑ Hosting **Community Wellness Retreat** – offering respite for single parents
- ❑ Hosting **Mental Health Symposium** to raise awareness



Additional Opportunities

The Fund

Small gifts to support programming, actions, partnerships and other events that promote child, family and community wellbeing.

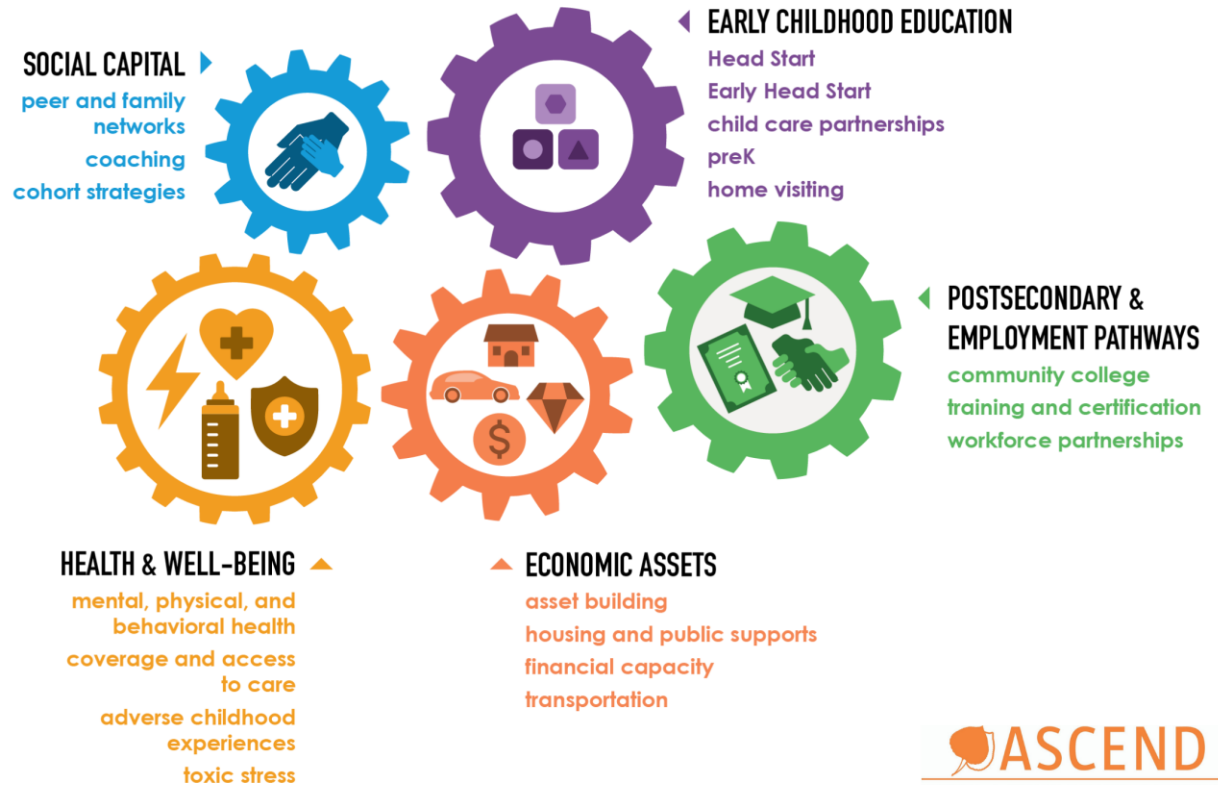
Community Strategy Retreats

Two opportunities for nonprofits to work across organizations, and alongside residents to think strategically about solutions to some of today's problems

Lower Manhattan Needs Assessment Findings

April 29, 2022

Needs Assessment Framework: ASCEND 2Gen Model



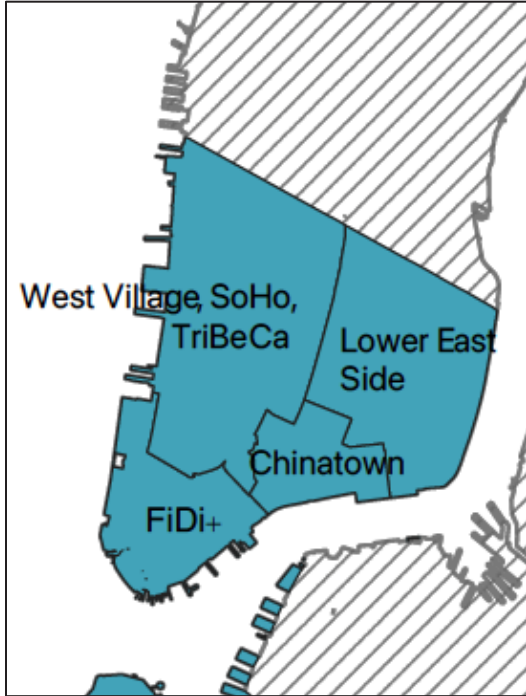


Neighborhood Support Needs Assessment Data

Information presented in the report includes qualitative and quantitative data collected through the following:

- Town Hall
 - Nearly 100 participants
 - 7 breakouts for group model building
- Community stakeholder interviews
 - 15 interviews
- Neighborhood-level secondary data
- Trinity Neighborhood Support listening sessions

Needs Assessment Focus Area: Lower Manhattan



Lower Manhattan: South of 14th Street

Trinity Neighborhood (# of Census Tracts)	Community District	Neighborhood Tabulation Area
Financial District + (10)	MN01	MN0101: Financial District – Battery Park City MN0191: The Battery – Governor’s Island
West Village, SoHo, TriBeCa (25)	MN02	MN0102: TriBeCa – Civic Center MN0201: SoHo – Little Italy – Hudson Square MN0202: Greenwich Village MN0203: West Village
Chinatown (7)	MN03	MN0301: Chinatown – Two Bridges
Lower East Side (24)	MN03	MN0302: Lower East Side MN0303: East Village

Table 14: Geographic Crosswalk, 2020²²



Understanding Community Needs & Opportunities in Lower Manhattan

The Main Causal Loop: Reinforcement of Inequity in Lower Manhattan



[There are] ways that the system is designed to keep people in poverty... It's very cyclical."

—Town Hall Participant, full quote on page 9

Community Mental Health & Wellbeing



“[Housing programs] want [people] to be stable health-wise... So the people who are really not doing well kind of get marginalized more because it’s like, ‘Oh, you have a positive urine drug screen. You can’t be a part of this program’... I think without addressing the housing and having all of these rules around it, it’s really — for a lot of the patients I see— it’s excluding them from that resource.”

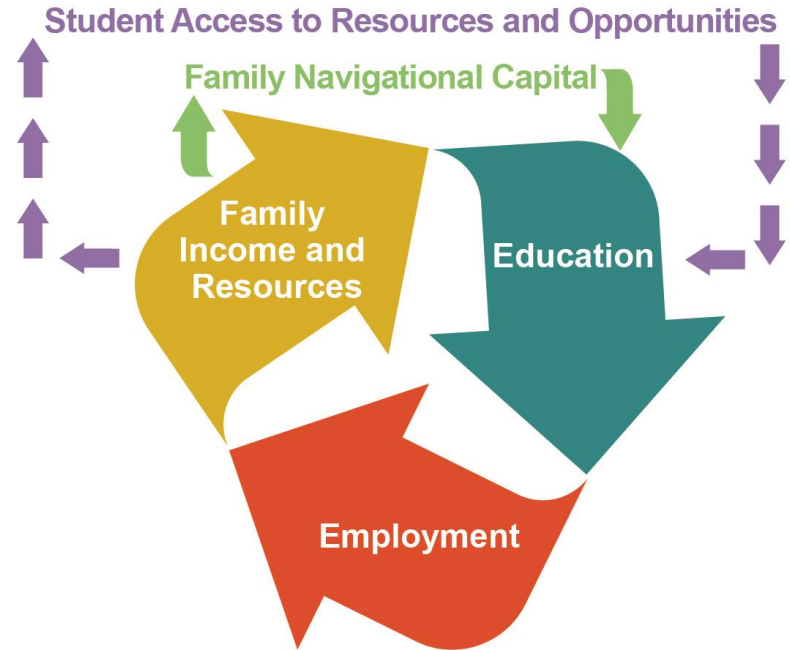
— Healthcare Provider



Education

“It’s not only money [provided to schools] it’s also...How are the parents [of students] empowered? How do they know how they can actually utilize these resources? How do they have ways to say what is important to them? How can they feel safe in a school? I remember... some of the PTA was just like, ‘our administration doesn’t want us to be empowered. They don’t want us to know.’ That was there. I don’t know if that was the actual truth, but that was how they felt.”

—Parent Leader, full quote on page 15



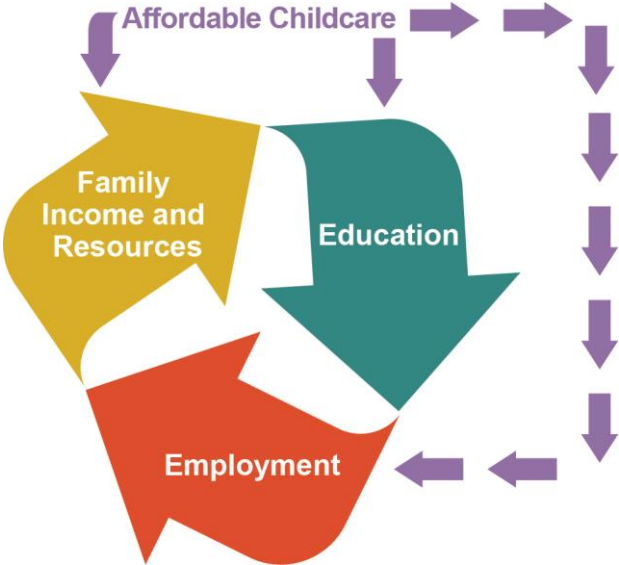
Affordable Childcare

Table 7: Median Childcare Costs for Infants & Toddlers Percent of Median Household Income, 2018

Household Type	MN01: Financial District	MN02: West Village - SoHo - TriBeCa	MN03: Chinatown and Lower East Side
Home-based Childcare			
All Households	3.4%	3.4%	21.5%
Married Couples	3.4%	3.4%	11.2%
Single Parents	7.2%	7.2%	42.9%
Center-based Childcare			
All Households	6.2%	6.2%	39.2%
Married Couples	6.2%	6.2%	20.5%
Single Parents	13.1%	13.1%	78.1%

“... a lot of the families who come here, who are newer immigrants, don’t necessarily have that support yet, or don’t know how to find it and become very isolated. And that impacts their family, and then just thinking about childcare – if they can’t find childcare, or affordable [childcare], then a parent can’t work. And so that impacts family income.”

—Town Hall Participant




COVID-19: Magnifying Disparities in Lower Manhattan

The COVID-19 pandemic exacerbated longstanding economic, racial, and social inequities for Lower Manhattan residents:

- Local Economy
- Mental Health and Wellbeing
- Education
- Hate Crimes and Anti-Asian Bias
- Housing and Homelessness

“I think the things that we already knew, where underlying issues kind of were exposed to the surface, and so we saw more folks needing food; we saw more [need for] mental health services. Just little things that we didn’t think were so pressing are now pressing.”

— Resident and Community Representative



Initiating Change in Lower Manhattan

The Role of Collaboration, Social
Cohesion, and Physical Space

Social Cohesion

- Divisions and disparities among residents in Lower Manhattan pose a challenge to social cohesion
- Social cohesion and mutual support as a crucial elements to healing from the impact of the COVID-19 pandemic
- Community resources, dedication, and willingness to contribute can be leveraged to promote collective change

*“I mean, you want to have the ability to feel **safe**, and **productive**, and **connected** and **belonging**. And those things cannot be achieved by programs ... As a bureaucrat, my solution is always [to] come up with a program, but I don't think that will be the right solution. How do you really create the capacity or the conditions so that people can connect with each other?”*

— Program Administrator

Collaboration

- Lack of collaboration contributes to duplicated efforts and unidentified service gaps
- Challenges with coordination and communication affect resource and service utilization
- Limited funding opportunities drive resource competition and prevent collaboration
- Meaningful collaboration, community partnerships, and resource sharing facilitate community building and system change

*“If we’re all working for the community, there is so much shared value in that, and making sure that you **build on those partnerships, you lift each other up...**The sad reality is there’s a lot of crumbs being thrown out. And that’s what makes that competition so intense. And **people feel like they’re fighting for dollars to keep their organizations afloat.** And...that’s really hard—that **we don’t invest in communities in really kind of impactful, powerful, meaningful ways.** More people, more companies, you know, more foundations should do it.”*

—Organization Leader and Community Representative



Physical Space

Spatial challenges in Lower Manhattan

- Availability and cost of real estate in Lower Manhattan
- Delivery of programs and services
- Access to dedicated spaces and experiences for play, enrichment, creativity, innovation, and learning

Role of physical space in community health, wellbeing, and resilience

- Social cohesion, safety, dignity, and respect
- Collaboration, resource sharing, coordination, and organizing

Moving Forward: Promoting Community Wellbeing and Resilience in Lower Manhattan

Needs Assessment Highlights and Opportunities

- Education, childcare, and community mental health efforts to promote upward mobility
- Social, racial, and economic inequities in Lower Manhattan are deeply rooted in structural racism and historical and current patterns of disinvestment
- Collaboration, social cohesion, and space as crucial elements to collective action and systems change
- Meaningful investments in existing community-led efforts
- Continued guidance and leadership from Lower Manhattan residents

“The challenges that we have in downtown Manhattan are the result of the same policy execution that has stymied upward mobility for generations that, literally for decades, it has been a sustained unwillingness by government and public sectors to make investments in people and in community.”

— Organization Leader, full quote on page 24

Thank You

We would like to extend our gratitude to all of you who shared your experience, wisdom, and time with us for this community needs assessment. Please reach out with any questions.

Daniel Chen

Associate Director, Research
danielchen@gwu.edu

Christina Reinke

Research Associate
creinke@gwu.edu





Next Steps



Next Steps

- Develop a **grantmaking strategy**
- Launch the **policy landscape analysis**
- Develop an **advocacy agenda**



Questions?



Thank you
for joining us

